



November 2022

## THE WHEAT BELT CONNECTION

### WHEAT BELT PPD Data Collection Project



*By: Andy Kuhns, IT/AMI Technician*

Over the past few months, you may have noticed a Wheat Belt contractor visiting your property and recording information about the electric service. This project kicked off in April and the data collection phase concluded in September.

During this time, each service was visited and the contractor collected information such as the service type, transformer and metering information. A site inspection noting potential maintenance issues was also conducted.

We are now in the process of comparing this data with our current records and resolving any discrepancies. This will ensure that our system databases and records are accurate and up to date. Correct information is essential to running our business effectively. Verifying that our services are sized correctly helps to prevent line loss and extra wear on the equipment. Knowing the condition and type of all deployed equipment helps to ensure that we have the proper inventory when maintenance is required. Clean, accurate data allows us to accomplish our mission of delivering electricity safely, reliably and efficiently.

**“With data collection, ‘the sooner the better’ is always the best answer.”**

*-Marissa Mayer, American businesswoman, former Yahoo! president and CEO*



### LUCKY DRAWING



Congratulations to Mike and Sue Phillips our September “Lucky Draw Winner”!

Mike and Sue reside in the Lisco/Broadwater area and operate a farm, ranch and feedlot operation. They have two sons; Jared and Jace who are 5th generation farmer/ranchers in the family operation on the table north of Lisco. Jared just got married in August, so they welcomed a daughter-in-law, Dori, to the family. Jared is active in the farming operation as well as having his own trucking business. Jace is active in the cattle operation along with owning his own underground sprinkler business. Mike, Jared and Jace are all active members of the Broadwater Fire Department.

Mike and Sue received a \$50 credit on their account for their prompt payment. If you would like to be included in our next drawing, and avoid a \$5 delinquent fee, please send your payment before the 16th of the month.

For your convenience, we offer several payment options. Please give us a call at 308-254-5871, or visit [wheatbelt.com](http://wheatbelt.com), and select the Customer Engagement page for information.



### IN THIS ISSUE



*Editor - Kelli Chaon*

Wheat Belt Data Collection Project	Page 12-A/B
Employee Spot Light	Page 12-B
Understanding Your Electric Bill	Page 12-B
Think Safety When Operating Generator	Page 12-C

P.O. BOX 177, 11306 RD 32, SIDNEY, NE 69162

P 308.254.5871 | T 800.261.7114 | [wheatbelt@wheatbelt.com](mailto:wheatbelt@wheatbelt.com) | [www.wheatbelt.com](http://www.wheatbelt.com)

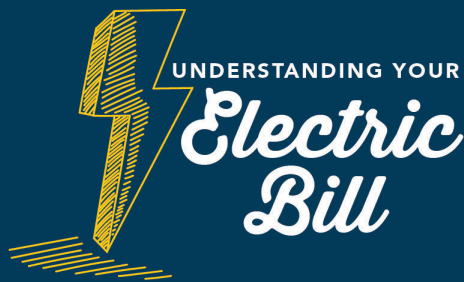
## EMPLOYEE SPOTLIGHT

### Nick Brauer Accountant

Nick Brauer joined our team in September of this year as our Accountant. Nick attended Western Nebraska Community College and received an associates degree before moving on to the University of Wyoming where he earned a Bachelor's Degree in Ag Business and Accounting. Prior to coming on board at Wheat Belt, Nick worked as an accountant at the following places: Whittle, Ostlund, Hamilton & Associates, Cabela's, Orthman MFG, Black Hills Energy, Aureus Group and Mercury

One. He stated his favorite part of the job this far is everything balances and all of the people here are great.

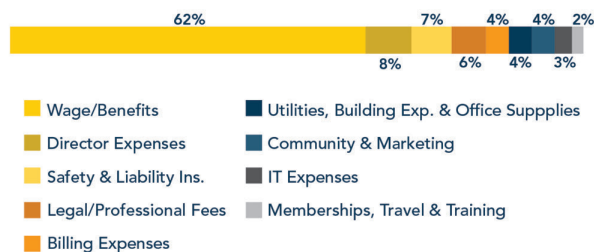
Nick has lived in Laramie, Cheyenne, Lexington, Gillette, Buffalo, Casper and was born and raised in Sidney. In his spare time, Nick enjoys hunting, fishing, camping, and watching sporting events.



Keep watching our Facebook page and your mail to learn more about this topic later in the month. For more information about administrative expenses, visit [wheatbelt.com/yourelectricbill](http://wheatbelt.com/yourelectricbill)

Over the past few months, we have covered the cost of electric service, including wholesale cost of power, poles, wires, transformers, meters, wire, vehicles and equipment, contract services and wages/benefits associated with these items. This month, we will cover administrative expenses.

Breakdown of Administrative Expenses



Administrative expenses include wages, benefits and associated expenses for the following areas: management, accounting, billing, customer service, marketing and metering. Additionally, Board of Director expenses, safety and insurances will be covered this month. Each year roughly \$2.8M is spent on administrative expenses. In the graph you can see how that money is spent.

# Moe's

Brian (Moe) Moffat



## Heating

Electric Heat Pumps



PO Box 410  
Oshkosh NE 69154  
308-772-3223  
Cell: 308-778-6100

## & Air Conditioning



**POINTS WEST**  
Community Bank  
A new direction in banking.

Proudly serving western Nebraska  
from these convenient locations:

#### Sidney

809 Illinois Street, Phone: (308)254-7110  
420 Glover Road, Phone: (308)254-5100

#### Dalton

301 Main Street, Phone: (308)377-2313

#### Kimball

201 South Chestnut, Phone: (308)235-3663

#### Chappell

774 2nd Street, Phone: (308)874-2215

#### Lisco

102 Coldwater, Phone: (308)772-3226



[www.pwcbank.com](http://www.pwcbank.com)

Member FDIC



Watch our Facebook page and your mail for continued communications about the cost of your electricity later this month. More information will be released as we prepare our cost-of-service study analysis and determine the best way to move forward.

We're here to help along the way. Visit [wheatbelt.com/yourelectricbill](http://wheatbelt.com/yourelectricbill) to learn more.

## Think Safety When Operating a Generator

A generator can be a valuable piece of equipment to keep appliances working during a power outage. Generators can be either temporary or permanently installed.

A permanent generator is wired into a house by a qualified electrician using a transfer switch that prevents a generator from feeding electricity back into overhead lines, which can be deadly for linemen.

A temporary generator is powered by gasoline and should not be attached to a circuit breaker, fuse or outlet. Before ever purchasing a generator, you need to know the wattage required to run the appliances you will attach to the generator. You also need to know the surge power, which is the power it takes to turn an appliance on.

Once you have purchased the proper generator, follow these tips from Safe Electricity to properly operate your generator:

- Read and follow all manufacturer operating instructions to properly ground the generator. Be sure you understand them before hooking up the generator.

- Never operate a generator in a confined area, such as a garage.

Generators can produce numerous gases, including toxic and deadly carbon monoxide. They require proper ventilation.

- Generators pose electrical risks especially when operated in wet conditions. Use a generator only when necessary, when the weather creates wet or moist conditions. Protect the generator by operating it under an open, canopy-like structure on a dry surface where water cannot form puddles or drain under it. Always ensure that your hands are dry before touching the generator.

- When you refuel the generator, make sure the engine is cool to prevent a fire, should the tank overflow.

- There should be nothing plugged into the generator when you turn it on. This prevents a surge from damaging your generator and appliances.

- Be sure to keep children and pets away from the generator, which could burn them.

- Shut down the generator properly. Before shutting down a generator, turn off and unplug all appliances and equipment being powered by the generator.

- Remember maintenance between uses. It is also a good idea to inspect the fuel and oil filters, spark plug, oil level and fuel quality and to start the generator on a regular basis before an emergency situation occurs.

For more information on electrical safety, visit [SafeElectricity.org](http://SafeElectricity.org).

**USING A GENERATOR?**  
**8 DANGEROUS MISTAKES PEOPLE MAKE**

- 1 IN ENCLOSED SPACES**  
Always use it in a well-ventilated area.
- 2 NEAR WINDOWS OR DOORS**  
Place it at least 20 feet away from windows and doors.
- 3 IN A GARAGE**  
Even if the door is up, never use a generator in a garage.
- 4 IN THE ELEMENTS**  
Run it on a dry surface under a canopy-like structure (but not in a carport).
- 5 PLUGGED INTO A WALL OUTLET**  
This can be deadly to you, family members, neighbors or utility workers.
- 6 WITH THE WRONG EXTENSION CORD**  
Use a properly rated cord to plug appliances into a generator.
- 7 WITHOUT CARBON MONOXIDE (CO) TESTERS**  
CO detectors should be on every level of your home (test them monthly).
- 8 IN DISREPAIR**  
Make sure your generator is well-maintained and in good working order.

**LEARN MORE AT:**  
[SafeElectricity.org](http://SafeElectricity.org)

**DAY & NIGHT**  
**PLUMBING & HEATING, LLC**  
Unparalleled Service Since 2002 \* Reliable Professionals  
COMMERCIAL \* RESIDENTIAL \* INDUSTRIAL  
NEW CONSTRUCTION \* REMODELS

- Plumbing
- Heating
- Air Conditioning
- Geothermal Heat Pumps
- Radiant/Radiant In-Floor
- Water Softeners
- Reverse Osmosis
- Maintenance Agreements
- Fixtures
- Water Heaters

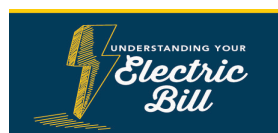
7am-4pm \* Monday-Friday \* 1400 Jackson St., Sidney NE  
308-254-1008 \* 24-hour Emergency Service

**ROOD'S TIRE CENTER**

- 24 Hour Farm & Road Service
- Complete Exhaust Work
- 4-Wheel Alignment (Cars or Trucks)
- Complete Brake Work
- Complete Suspension Work
- Alignments
- Computer Balance (Cars/Light & Large Trucks)
- Oil Change & Lube
- Shocks and Struts
- Wheels

Most Major Brand Tires  
Michelin - Uniroyal - Firestone - BF Goodrich - Kelly - Goodyear

1744 Illinois  
Sidney NE 69162  
308-254-6127 or 800-303-6127



Watch our Facebook page and your mail for continued communications about the cost of your electricity later this month. More information will be released as we prepare our cost-of-service study analysis and determine the best way to move forward.

We're here to help along the way. Visit [wheatbelt.com/yourelectricbill](http://wheatbelt.com/yourelectricbill) to learn more.





**Happy Thanksgiving**  
From all of us at Wheat Belt PPD

## Energy Efficiency Tip of the Month

Blocked air vents force your heating system to work harder than necessary and increase pressure in the ductwork, which can cause cracks and leaks to form. Make sure all air vents are unobstructed from furniture, drapes or other items to ensure sufficient circulation throughout your home. If necessary, purchase a vent extender, which can be placed over a vent to redirect air flow from underneath furniture.

Source: [energy.gov](http://energy.gov)



## BOARD OF DIRECTORS

### **PRESIDENT**

Brian Zimmerman, *Big Springs*

### **VICE PRESIDENT**

Stuart Morgan, *Dalton*

### **SECRETARY**

Brian "Moe" Moffat, *Oshkosh*

### **TREASURER**

Marcus Milanuk, *Oshkosh*

### **ASSISTANT SECRETARY**

Toni Blomenkamp, *Broadwater*

### **DIRECTOR**

Sean Blackburn, *Sidney*

### **DIRECTOR**

Jennifer Eckhardt, *Dalton*

## MANAGERS

### **GENERAL MANAGER / CEO**

Lacey Gulbranson

### **MANAGER OF CORPORATE SERVICES / CFO**

Sharrell Keane

### **ENGINEERING & LINE CREW MANAGER**

Ryan Borges

### **MANAGER OF TECHNOLOGIES**

Jim Weeda

### **CUSTOMER ENGAGEMENT MANAGER**

Kelli Chaon

### **OFFICE HOURS:**

7:30 a.m. to 4:00 p.m.

**P** 308.254.5871 | **T** 800.261.7114 | **F** 308.254.2384

[wheatbelt@wheatbelt.com](mailto:wheatbelt@wheatbelt.com)

## Our Mission

**Deliver electricity safely, reliably and efficiently.**



Watch our Facebook page and your mail for continued communications about the cost of your electricity later this month. More information will be released as we prepare our cost-of-service study analysis and determine the best way to move forward.

We're here to help along the way. Visit [wheatbelt.com/yourelectricbill](http://wheatbelt.com/yourelectricbill) to learn more.